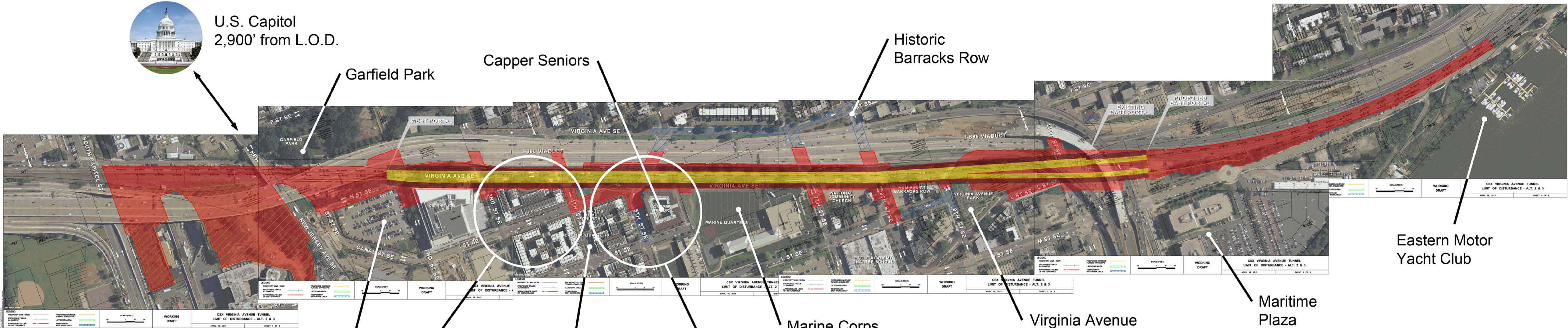
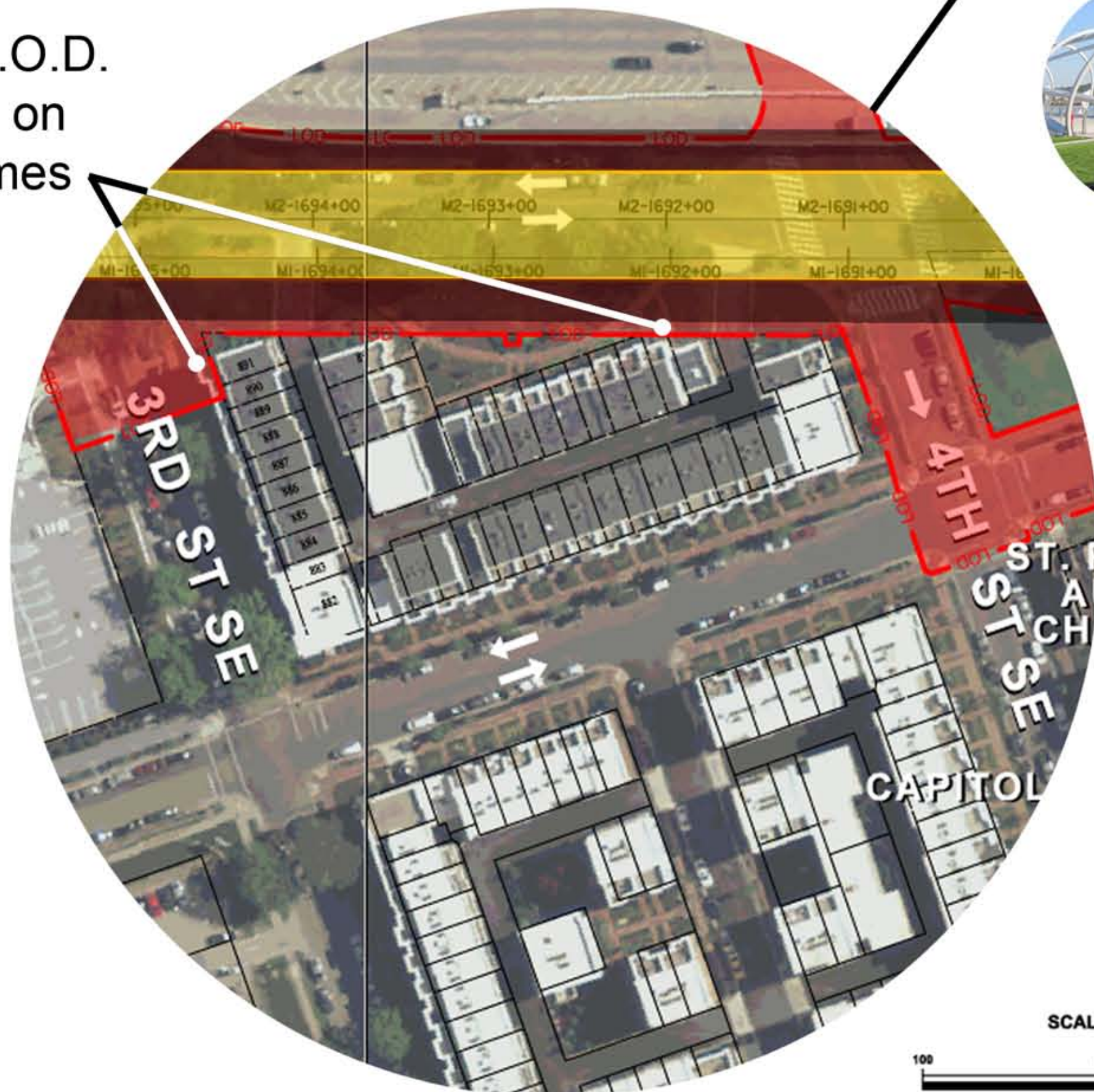




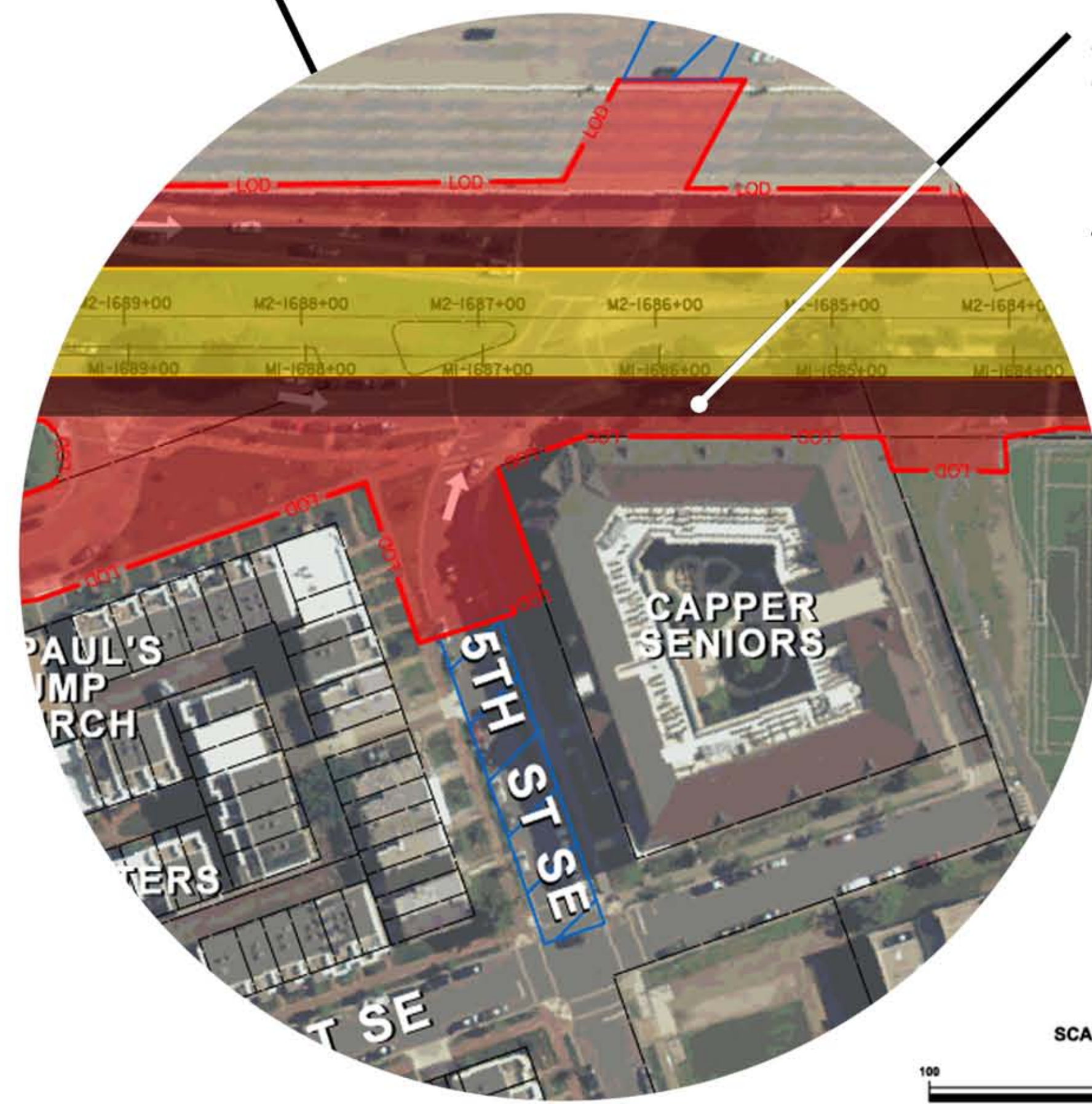
U.S. Capitol
2,900' from L.O.D.






Proposed L.O.D. encroaches on existing homes



Yards Park
2,600' from L.O.D.



Approx. distance from face of permanent tunnel to Capper Seniors is less than 35'

-  Proposed Permanent Tunnel
-  Proposed Temp. Tunnel Alternates
-  Proposed Limit of Disturbance

VIRGINIA AVENUE TUNNEL PROPOSED LIMITS OF DISTURBANCE FOR OPTIONS 2 + 3

Source: Draft Environmental Statement & Section 4(f) Evaluation,
U.S. Federal Highway Administration and District Department
of Transportation, July 2013